

---

# Avapritinib as first-line therapy in patients with advanced systemic mastocytosis: Efficacy and safety from the PATHFINDER clinical study

**Deepti H. Radia,<sup>1</sup> Jason Gotlib,<sup>2</sup> Mark W. Drummond,<sup>3</sup> Tracy I. George,<sup>4</sup> Hui-Min Lin,<sup>5</sup> Saša Dimitrijević,<sup>6</sup> Javier I. Muñoz-González,<sup>6</sup> Ilda Bidollari,<sup>5</sup> Michael W. Deininger,<sup>7</sup> Daniel J. DeAngelo,<sup>8</sup> Andreas Reiter<sup>9</sup>**

<sup>1</sup>Guy's & St Thomas's NHS Foundation Trust, London, UK; <sup>2</sup>Stanford Cancer Institute/Stanford University School of Medicine, Stanford, CA, USA;

<sup>3</sup>Beatson Cancer Centre, Glasgow, UK; <sup>4</sup>ARUP Laboratories, University of Utah, Salt Lake City, UT, USA;

<sup>5</sup>Blueprint Medicines Corporation, Cambridge, MA, USA; <sup>6</sup>Blueprint Medicines (Switzerland) GmbH, Zug, Switzerland;

<sup>7</sup>Versiti Blood Research Institute and Division of Hematology and Oncology, Medical College of Wisconsin, Milwaukee, WI, USA;

<sup>8</sup>Dana-Farber Cancer Institute, Boston, MA, USA;

<sup>9</sup>Department of Hematology and Oncology, University Hospital Mannheim, Heidelberg University, Mannheim, Germany.

**Presented at: ASH 2022 Annual Meeting, New Orleans, Louisiana  
December 10 to December 13, 2022**

# Disclosures

---

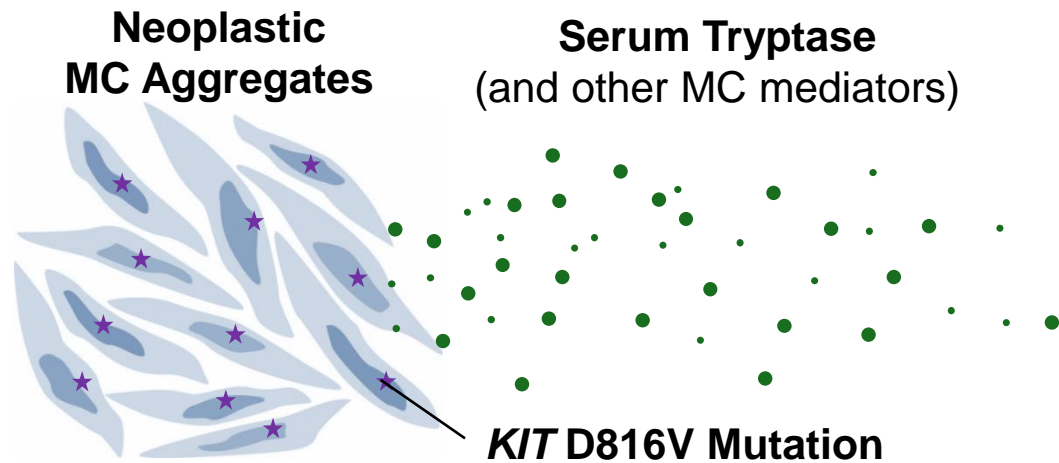
AYVAKIT<sup>®</sup> (avapritinib) is approved by the US Food and Drug Administration (FDA) for the treatment of adult patients with advanced systemic mastocytosis (AdvSM). AdvSM includes patients with aggressive systemic mastocytosis (ASM), systemic mastocytosis with an associated hematological neoplasm (SM-AHN), and mast cell leukemia (MCL).

AYVAKYT<sup>®</sup> (avapritinib) is approved by the European Medicines Agency (EMA) as monotherapy for the treatment of adult patients with ASM, SM-AHN, or MCL, after at least one systemic therapy.

Limitations of Use: AYVAKIT is not recommended for the treatment of patients with AdvSM with platelet counts of  $<50 \times 10^9/L$ .

# Advanced systemic mastocytosis is a rare myeloid neoplasm driven by the *KIT* D816V mutation in approximately 95% of cases<sup>1,2</sup>

- AdvSM includes three subtypes: ASM, SM-AHN, and MCL,<sup>3,4</sup> all with high disease burden and limited treatment options<sup>3-5</sup>
  - SM-AHN is the most prevalent (~70%), subtypes include CMML, MDS/MPN-U, MDS and CEL
- Proliferation of malignant mast cells can result in life-threatening organ damage due to infiltration by mast cells<sup>6</sup>
- Symptoms are often severe, debilitating and complicated by mast cell mediator release<sup>6</sup>



## Organ Damage (C-findings)

- Cytopenias
- Liver dysfunction
- Ascites, pleural effusions
- Splenomegaly with hypersplenism
- Malabsorption with weight loss
- Large osteolytic lesions

AdvSM, advanced systemic mastocytosis; ASM, aggressive systemic mastocytosis; CEL, chronic eosinophilic leukemia; CMML, chronic myelomonocytic leukemia; MC, mast cell; MCL, mast cell leukemia; MDS, myelodysplastic syndrome; MPN-U, myeloproliferative neoplasms unclassifiable; SM-AHN, systemic mastocytosis with associated hematologic neoplasm.

1. Ungerstedt J et al. *Cancers*. 2022;14:3942. 2. Garcia-Montero A et al. *Blood*. 2006;108:2366-2372. 3. Gotlib J et al. *Blood*. 2013;121:2392-2401;

4. Jennings S et al. *Immunol Allergy Clin N Am*. 2018;38:505-525; 5. Midostaurin for treating advanced mastocytosis. NICE Technology appraisal guidance. <https://www.nice.org.uk/guidance/ta728/chapter/1-Recommendations>. Accessed February 17, 2022. 6. Pardanani A. *Am J Hematol*. 2019;94:363-377;

# Avapritinib in advanced systemic mastocytosis

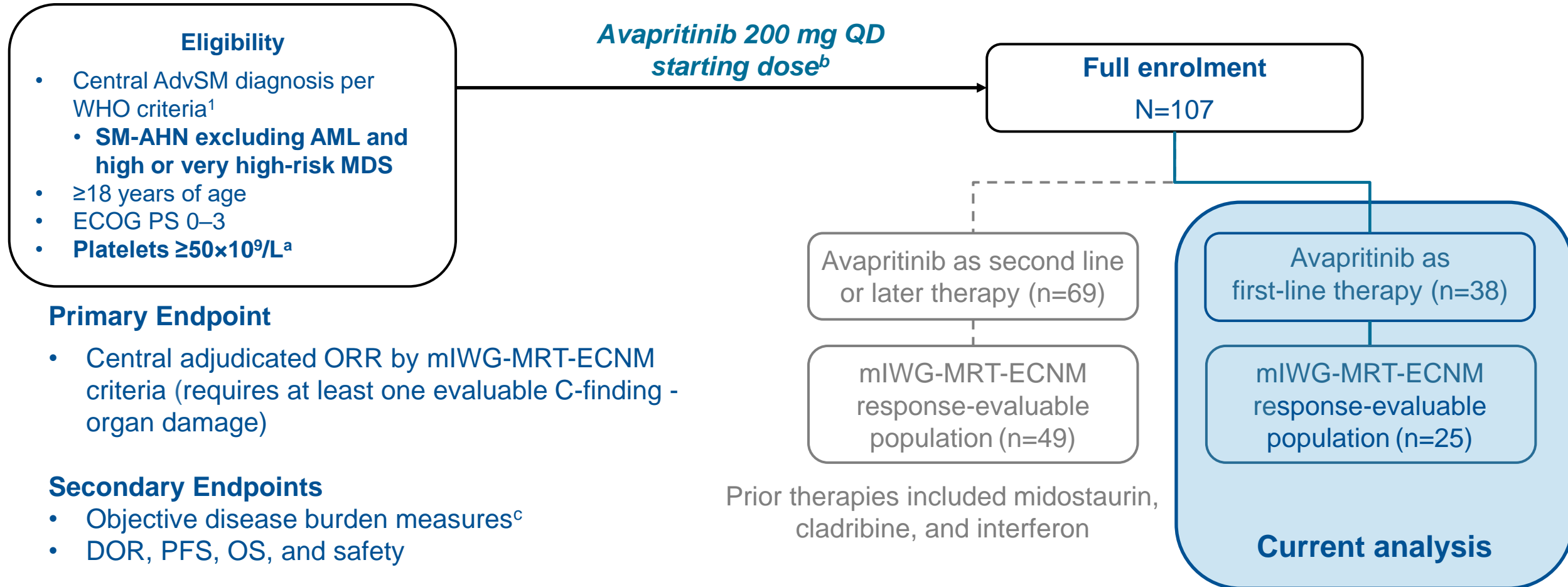
---

- Avapritinib is an oral, highly potent, and selective inhibitor of KIT D816V, approved in the USA and the EU based on results from the phase 1 EXPLORER study and interim results from phase 2 PATHFINDER (NCT03580655) study<sup>1-4</sup>
- Response rate<sup>a</sup> regardless of prior therapy was 75% in both studies<sup>1,2</sup>
- Rapid and durable responses across all AdvSM subtypes and regardless of prior therapy
- Avapritinib showed significantly better survival benefit vs best available therapy (including midostaurin and cladribine) in a retrospective real-world analysis<sup>5</sup>

<sup>a</sup>Response rate includes complete remission, complete remission with partial hematologic recovery, partial remission, and clinical improvement.

1. DeAngelo D et al. *Nature Medicine*. 2021;27:2183–2191; 2. Gotlib J et al. *Nature Medicine*. 2021;27:2192–2199; 3. Ayvakit (avapritinib) [package insert]. Cambridge, MA: Blueprint Medicines Corporation; 2021; 4. Ayvakit (avapritinib) Summary of Product Characteristics. Cambridge, MA; Blueprint Medicines Corporation; 2022. 5. Reiter A et al. *Leukemia*. 2022;36:2108-2120.

# Avapritinib as first-line therapy in patients from PATHFINDER



<sup>a</sup>Implemented in 2019 to reduce risk of intracranial bleeding. <sup>b</sup>2 patients initiated 100 mg QD avapritinib, all others initiated at 200 mg QD. <sup>c</sup>Disease burden measures include bone marrow MCs, serum tryptase, *KIT* D816V variant allele fraction, and spleen volume. No type 1 error control for these endpoints.

DOR, duration of response; ECOG PS, Eastern Cooperative Oncology Group performance status; MC, mast cell; mIWG-MRT-ECNM, modified International Working Group-Myeloproliferative Neoplasms Research and Treatment and European Competence Network on Mastocytosis; ORR, overall response rate; OS, overall survival; PFS, progression free survival; QD, once daily; WHO, World Health Organization.

1. Horny HP et al. Mastocytosis. In: Sverdlow SH et al. World Health Organization (WHO) Classification of Tumours. Pathology & Genetics. Tumours of Haematopoietic and Lymphoid Tissues. Lyon, France: IARC Press; 2016.

# Baseline characteristics

| Characteristic                                             | First-line population   |                                 |
|------------------------------------------------------------|-------------------------|---------------------------------|
|                                                            | All 200 mg QD (N=38)    | mIWG-evaluable 200 mg QD (N=25) |
| Median age, years (range)                                  | 68 (39–88)              | 68 (54–88)                      |
| Male, n (%)                                                | 20 (53)                 | 12 (48)                         |
| ECOG PS, n (%)                                             |                         |                                 |
| 0–1                                                        | 32 (84)                 | 20 (80)                         |
| 2–3                                                        | 6 (16)                  | 5 (20)                          |
| Disease type                                               |                         |                                 |
| ASM, n (%)                                                 | 7 (18)                  | 4 (16)                          |
| SM-AHN, n (%)                                              | 28 (74)                 | 19 (76)                         |
| CMML, n (%)                                                | 11 (39)                 | 9 (47)                          |
| MDS/MPN-U, n (%)                                           | 7 (25)                  | 4 (21)                          |
| MDS, n (%)                                                 | 6 (21)                  | 3 (16)                          |
| CEL, n (%)                                                 | 3 (11)                  | 2 (11)                          |
| CMML-HE, n (%)                                             | 1 (4)                   | 1 (5)                           |
| MCL, n (%)                                                 | 3 (8)                   | 2 (8)                           |
| Median BM myeloblasts, % (range)                           | 2 (1–7)                 | 2 (1–7)                         |
| Median BM MC burden, % (range)                             | 35 (3–90)               | 40 (10–90)                      |
| Median serum tryptase, ng/mL (range)                       | 178 (37.3–1336)         | 171 (37.3–1336)                 |
| Molecular data                                             |                         |                                 |
| <i>KIT</i> D816V positive, n (%)                           | 36 (94.7)               | 25 (100)                        |
| <i>KIT</i> D816V VAF in peripheral blood, median % (range) | 5.5 <sup>b</sup> (0–45) | 9.9 <sup>a</sup> (0–45)         |
| <i>SRSF2/ASXL1/RUNX1</i> positive, n (%)                   | 23 (60.5)               | 17 (68)                         |
| Median spleen volume mL (range)                            | 863 (149.8–2897.1)      | 808 (149.8–1511.8)              |

Majority of patients had SM-AHN

<sup>a</sup>Only patients with positive values were included in this analysis, n=24. <sup>b</sup>Only patients with positive values were included in this analysis, n=37. BM, bone marrow; CMML-HE, chronic myelomonocytic leukemia with hypereosinophilia; VAF, variant allele fraction.

# High ORR across subtypes including patients with SM-AHN

| Outcome, % (n)                                      | All <sup>a</sup><br>(n=25) | ASM<br>(n=4)    | SM-AHN<br>(n=19) | MCL<br>(n=2) |
|-----------------------------------------------------|----------------------------|-----------------|------------------|--------------|
| <b>ORR,<sup>b</sup></b>                             | <b>84 (n=21)</b>           | <b>75 (n=3)</b> | <b>95 (n=18)</b> | –            |
| CR or CRh                                           | 32 (n=8)                   | 25 (n=1)        | 37 (n=7)         | –            |
| Complete Remission                                  | 8 (n=2)                    | –               | 11 (n=2)         | –            |
| CR with Partial Hematologic Recovery <sup>c</sup>   | 24 (n=6)                   | 25 (n=1)        | 26 (n=5)         | –            |
| Partial Remission <sup>d</sup>                      | 48 (n=12)                  | 50 (n=2)        | 53 (n=10)        | –            |
| Clinical Improvement                                | 4 (n=1)                    | –               | 5 (n=1)          | –            |
| <b>Stable Disease</b>                               | 16 (n=4)                   | 25 (n=1)        | 5 (n=1)          | 100 (n=2)    |
| <b>Progressive Disease</b>                          | –                          | –               | –                | –            |
| <b>Not Evaluable</b>                                | –                          | –               | –                | –            |
| <b>Median time to response (range), months</b>      | 2.0 (0.3–12.2)             | 1.9 (0.3–2.1)   | 2.2 (0.5–12.2)   | –            |
| <b>Median time to CR/CRh (range), months</b>        | 5.8 (2.0–12.2)             | 2.1 (2.1–2.1)   | 6.1 (2.0–12.2)   | –            |
| <b>Median duration of response (95% CI), months</b> | NR                         | NR              | NR               | NE           |

- **32% of patients in the ORR-evaluable population experienced complete remission (CR or CRh)**

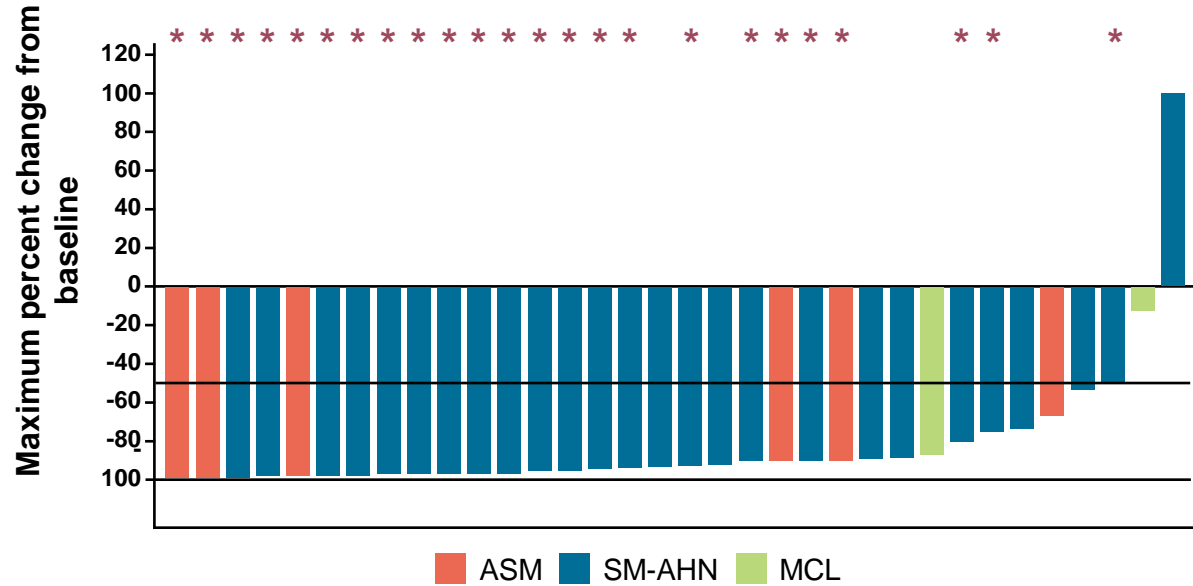
Data cut off: April 20, 2021. <sup>a</sup>25 treatment-naïve patients with a confirmed diagnosis of AdvSM, and ORR evaluable per mIWG-MRT-ECNM criteria at baseline. <sup>b</sup>ORR includes CR, CRh, PR and CI.

<sup>c</sup>CRh requires full resolution of all evaluable C-findings, elimination of BM MC aggregates, serum tryptase <20 ng/mL, resolution of palpable hepatosplenomegaly, and partial hematologic recovery (defined as absolute neutrophil count >0.5×10<sup>9</sup>/L with normal differential, platelet count >50×10<sup>9</sup>/L, and Hgb level >8.0 g/dL). <sup>d</sup>PR requires full resolution of ≥1 evaluable C-findings and ≥50% reduction in both BM MCs and serum tryptase. CI, clinical improvement; CR, complete remission; CRh, complete remission with partial hematologic recovery; NE, not evaluable; NR, not reached; ORR, overall response rate; PD, progressive disease; PR, partial remission; SD, stable disease.

# Profound reduction in disease burden observed across subtypes

## Bone marrow MCs<sup>a</sup>

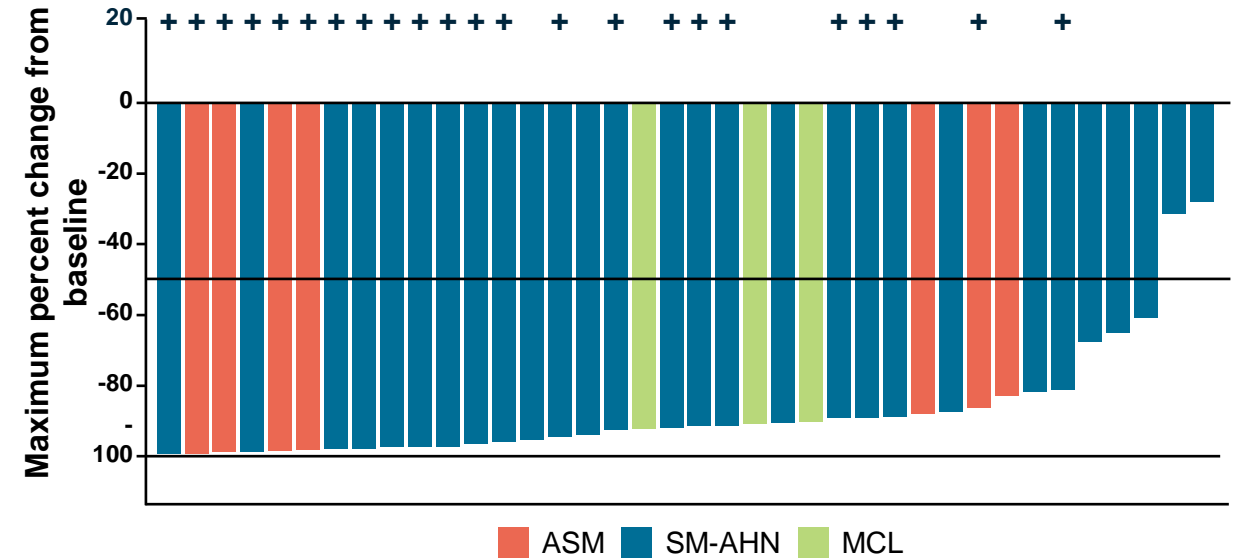
- Bone marrow MCs decreased by  $\geq 50\%$  in 84% of patients (32/38), including 25 of 28 patients with SM-AHN
- MC aggregates total clearance in 63% of patients (24/38), including 19 of 28 patients with SM-AHN



\* Best response: CR

## Serum tryptase<sup>a</sup>

- Serum tryptase level decreased by  $\geq 50\%$  in 95% of patients (36/38), including 26 of 28 patients with SM-AHN
- 60% of patients (22/37) had CR (decrease to  $< 20$  ng/mL) in serum tryptase, including 18 of 28 patients with SM-AHN



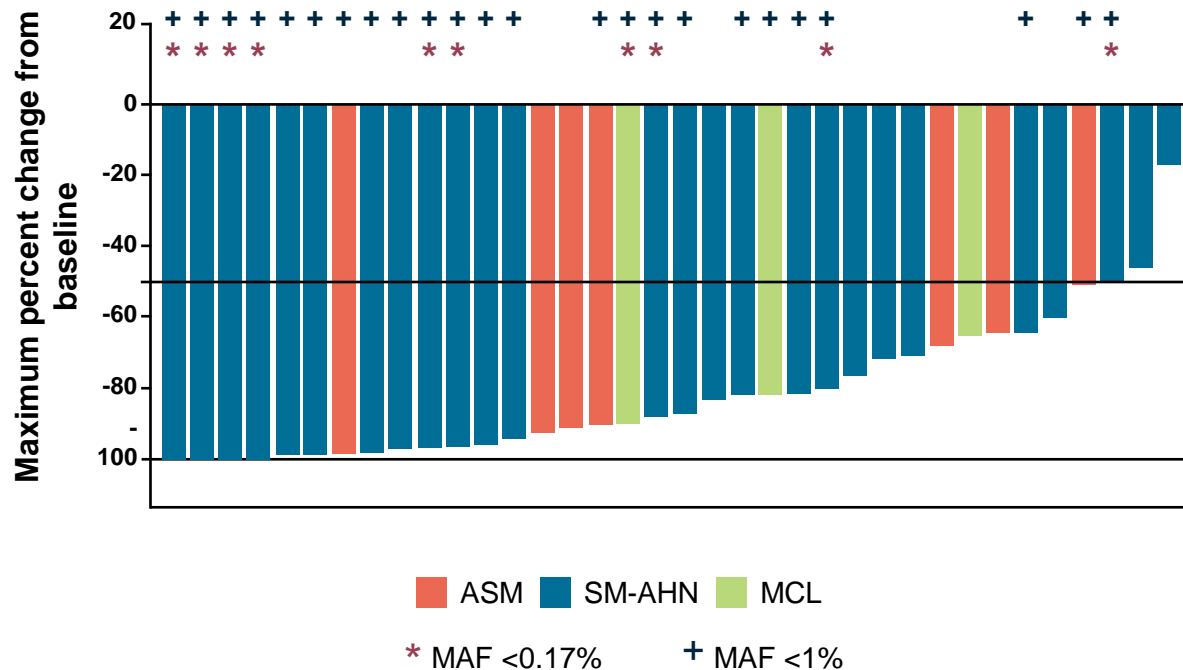
+ Tryptase  $< 20$  ng/mL



# Profound reduction in disease burden observed across subtypes

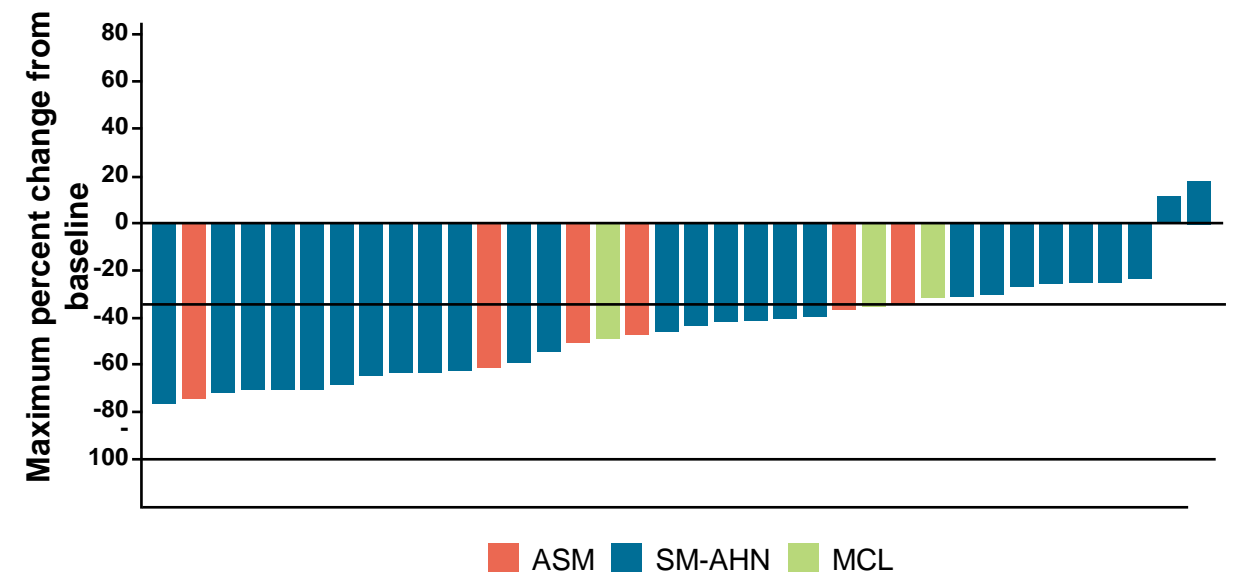
## KIT D816V variant allele fraction in peripheral blood<sup>a</sup>

- **KIT D816V VAF<sup>b</sup> decreased by  $\geq 50\%$  in 89% of patients (34/38), including 24 of 28 patients with SM-AHN**
- **KIT D816V VAF<sup>b</sup> decreased below 1% in 63% of patients (24/38), including 19 of 28 patients with SM-AHN**



## Spleen volume<sup>a</sup>

- **Spleen volume decreased by  $\geq 35\%$  in 66% of patients (25/38), including 18 of 28 patients with SM-AHN**
- **61% (n=11/18) of patients whose spleen was palpable at baseline became non-palpable during treatment, including 10 of 28 patients with SM-AHN**



Data cut off: April 20, 2021.

<sup>a</sup>There was no type I error control.

<sup>b</sup>KIT D816V VAF measured in peripheral blood using a ddPCR assay with detection limit of 0.17%, consistent with prior presentations on AdvSM. ddPCR, droplet digital polymerase chain reaction.

# High ORR across subtypes including patients with SM-AHN

| Outcome, % (n)                                      | All <sup>a</sup><br>(n=25) | ASM<br>(n=4)  |
|-----------------------------------------------------|----------------------------|---------------|
| <b>ORR,<sup>b</sup></b>                             | 84 (n=21)                  | 75 (n=3)      |
| CR or CRh                                           | 32 (n=8)                   | 25 (n=1)      |
| Complete Remission                                  | 8 (n=2)                    | –             |
| CR with Partial Hematologic Recovery <sup>c</sup>   | 24 (n=6)                   | 25 (n=1)      |
| Partial Remission <sup>d</sup>                      | 48 (n=12)                  | 50 (n=2)      |
| Clinical Improvement                                | 4 (n=1)                    | –             |
| <b>Stable Disease</b>                               | 16 (n=4)                   | 25 (n=1)      |
| <b>Progressive Disease</b>                          | –                          | –             |
| <b>Not Evaluable</b>                                | –                          | –             |
| <b>Median time to response (range), months</b>      | 2.0 (0.3–12.2)             | 1.9 (0.3–2.1) |
| <b>Median time to CR/CRh (range), months</b>        | 5.8 (2.0–12.2)             | 2.1 (2.1–2.1) |
| <b>Median duration of response (95% CI), months</b> | NR                         | NR            |

| SM-AHN<br>(n=19) |
|------------------|
| <b>95 (n=18)</b> |
| 37 (n=7)         |
| 11 (n=2)         |
| 26 (n=5)         |
| 53 (n=10)        |
| 5 (n=1)          |
| 5 (n=1)          |
| –                |
| –                |
| 2.2 (0.5–12.2)   |
| 6.1 (2.0–12.2)   |
| NR               |

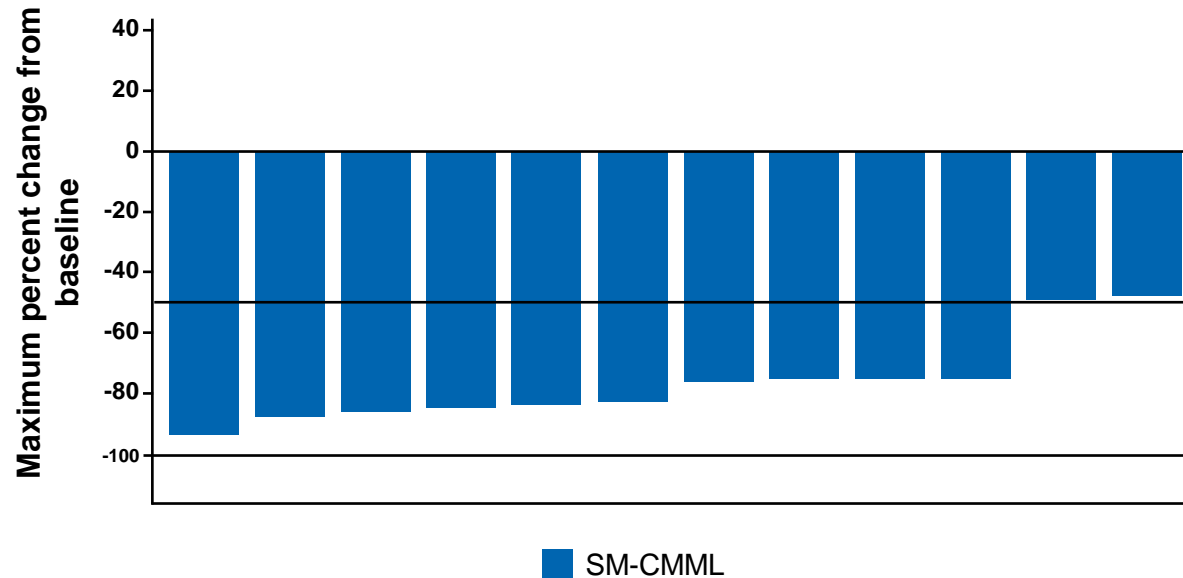
| MCL<br>(n=2) |
|--------------|
| –            |
| –            |
| –            |
| –            |
| –            |
| 100 (n=2)    |
| –            |
| –            |
| –            |
| –            |
| NE           |

Data cut off: April 20, 2021. <sup>a</sup>25 treatment-naïve patients with a confirmed diagnosis of AdvSM, and ORR evaluable per mIWG-MRT-ECNM criteria at baseline. <sup>b</sup>ORR includes CR, CRh, PR and CI. <sup>c</sup>CRh requires full resolution of all evaluable C-findings, elimination of BM MC aggregates, serum tryptase <20 ng/mL, resolution of palpable hepatosplenomegaly, and partial hematologic recovery (defined as absolute neutrophil count >0.5×10<sup>9</sup>/L with normal differential, platelet count >50×10<sup>9</sup>/L, and Hgb level >8.0 g/dL). <sup>d</sup>PR requires full resolution of ≥1 evaluable C-findings and ≥50% reduction in both BM MCs and serum tryptase. CI, clinical improvement; CR, complete remission; CRh, complete remission with partial hematologic recovery; NE, not evaluable; NR, not reached; ORR, overall response rate; PD, progressive disease; PR, partial remission; SD, stable disease.

# Reduction in circulating monocytes and eosinophils observed

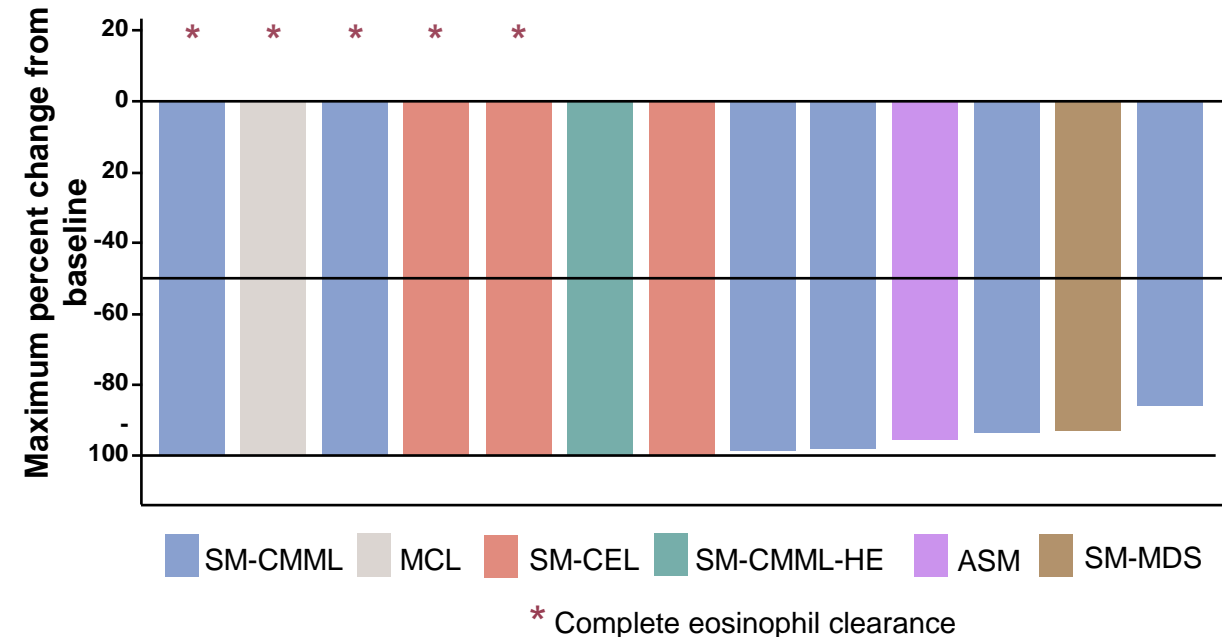
## Monocytes in peripheral blood<sup>a</sup> (patients with SM-CMML)

- All 12 patients with CMML and post-baseline measurements showed decreases in monocyte counts with avapritinib



## Eosinophils in peripheral blood<sup>a</sup>

- All 13 patients with baseline eosinophilia and post-baseline measurements showed decreases in eosinophil counts
- Five (38%) patients including 4 with SM-AHN had complete clearance of eosinophils



## Bone marrow blasts

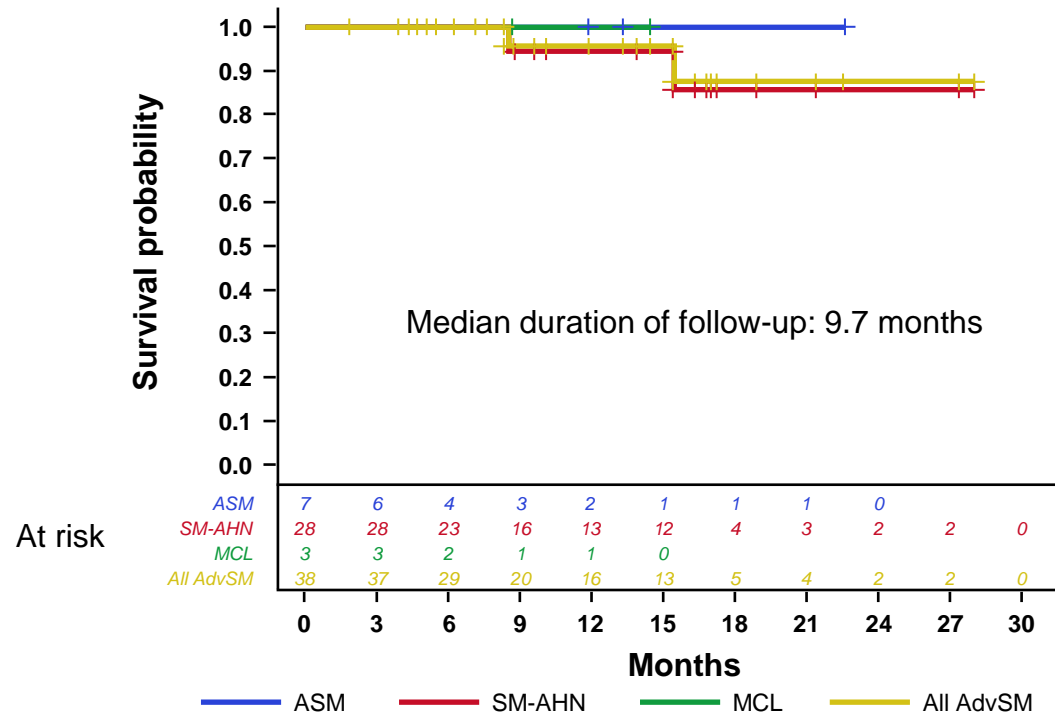
- Bone marrow blasts were reduced in 44% of patients with measurements (15/34), including 11 of 26 patients with SM-AHN

<sup>a</sup>There was no type I error control. Data was not statistically powered for these analyses.

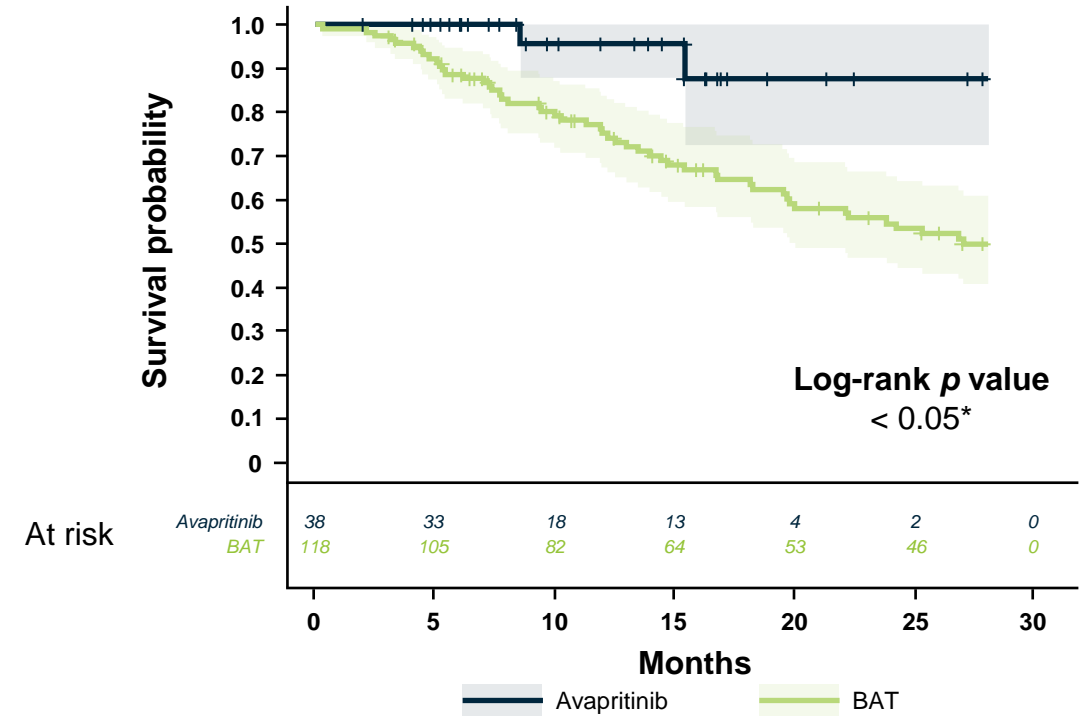
SM-CEL, systemic mastocytosis with chronic eosinophilic leukemia; SM-CMML, systemic mastocytosis with associated hematologic neoplasm of chronic myelomonocytic leukemia; SM-CMML-HE, systemic mastocytosis with associated hematologic neoplasm of chronic myelomonocytic leukemia with hypereosinophilia; SM-MDS, systemic mastocytosis with myelodysplastic syndrome

# Overall survival in PATHFINDER and vs real-world data

## OS by disease subtypes



## OS with avapritinib vs real-world best available therapy<sup>a</sup>



| Estimated OS rate (95% CI) | All (n=38)      | ASM (n=7)     | SM-AHN (n=28)   | MCL (n=3)     |
|----------------------------|-----------------|---------------|-----------------|---------------|
| <b>12 months</b>           | 95.7 (87.3–100) | 100 (100–100) | 94.4 (83.9–100) | 100 (100–100) |
| <b>24 months</b>           | 87.7 (70.9–100) | -             | 85.9 (67.2–100) | -             |

<sup>a</sup>Data for best available therapy from retrospective real-world patient chart review, methodology described previously; shading represents 95% confidence interval.<sup>1</sup> BAT, best available therapy.

1. Reiter A et al. Leukemia. 2022;36:2108-2120.

# Avapritinib was generally well tolerated with a favorable benefit-risk profile

| TRAEs in ≥10% of patients, n (%)     | Any grade | Grade ≥3 |
|--------------------------------------|-----------|----------|
| <b>Hematologic events, n (%)</b>     |           |          |
| Thrombocytopenia                     | 17 (44.7) | 8 (21.1) |
| Anemia                               | 10 (26.3) | 5 (13.2) |
| Neutropenia                          | 7 (18.4)  | 6 (15.8) |
| Neutrophil count decreased           | 6 (15.8)  | 5 (13.2) |
| <b>Non-hematologic events, n (%)</b> |           |          |
| Periorbital edema                    | 20 (52.6) | 2 (5.3)  |
| Edema peripheral                     | 14 (36.8) | 1 (2.6)  |
| Dysgeusia                            | 7 (18.4)  | 0        |
| Fatigue                              | 6 (15.8)  | 1 (2.6)  |
| Nausea                               | 5 (13.2)  | 0        |
| Face edema                           | 5 (13.2)  | 0        |
| Eyelid edema                         | 5 (13.2)  | 0        |
| Hair color changes                   | 5 (13.2)  | 0        |
| Edema                                | 4 (10.5)  | 0        |
| Alopecia                             | 4 (10.5)  | 0        |
| Cognitive disorder                   | 4 (10.5)  | 0        |

In 38 patients who initiated 200 mg QD without prior antineoplastic treatment, the safety profile was similar to what was previously reported for avapritinib<sup>1</sup>:

- The most common TRAEs included periorbital edema, thrombocytopenia, and edema peripheral
- AEs were generally managed with dose modifications
  - TRAEs leading to dose reduction and interruption occurred in 74% (28/38) and 66% (25/38) of patients
- One intracranial bleeding event was reported in a patient who previously experienced head trauma
- Four (11%) patients discontinued treatment due to TRAEs
- No treatment-related deaths

# Avapritinib demonstrates efficacy and tolerability as first-line treatment for patients with AdvSM

---

- **High response rate to avapritinib in previously untreated patients with AdvSM across subtypes**
  - 84% ORR (mIWG-MRT-ECNM criteria) including 32% CR/CRh (resolution of organ damage)
  - 95% ORR in patients with SM-AHN
- **Marked reductions in objective measures of disease burden**
  - $\geq 50\%$  in BM MCs, serum tryptase, and *KIT* D816V VAF
  - Reductions in monocyte and eosinophil count observed in all patients with CMML and eosinophilia
- **Median OS not reached across subtypes**
  - 86% OS rate at 24 months in patients with SM-AHN
  - First-line avapritinib significantly improved OS vs real-world best available therapy<sup>a</sup>
- **Favorable benefit-risk as first-line treatment for patients with AdvSM**
  - Avapritinib was generally well-tolerated; AEs were managed with dose reductions/interruptions

<sup>a</sup>Data for best available therapy from retrospective real-world patient chart review

# Acknowledgements

- Participating patients and families
- Avapritinib investigators and research coordinators
- Colleagues at Blueprint Medicines Corporation
- Medical writing support was provided by Appitha Eakin, PhD, and editorial support was provided by Travis Taylor, BA, all of Paragon, Knutsford, UK, supported by Blueprint Medicines Corporation, Cambridge, MA, according to Good Publication Practice guidelines

| Investigator                              | Center                                                                 |
|-------------------------------------------|------------------------------------------------------------------------|
| Dr Deepti Radia                           | Guy's and St Thomas' NHS Foundation Trust, Guy's Hospital, London, UK  |
| Dr Daniel J. DeAngelo                     | Dana-Farber Cancer Institute, Boston, MA, USA                          |
| Dr Michael Deininger/<br>Dr Tsewang Tashi | Huntsman Cancer Institute, University of Utah, Salt Lake City, UT, USA |
| Dr Kristin Pettit                         | University of Michigan Comprehensive Cancer Center, Ann Arbor, MI, USA |
| Dr Jason Gotlib                           | Stanford Cancer Institute, Stanford, CA, USA                           |
| Dr Mark Heaney                            | Herbert Irving Comprehensive Cancer Center, New York City, NY, USA     |
| Dr Ruben Mesa                             | Mays Cancer Center, San Antonio, TX, USA                               |
| Dr Celalettin Ustun                       | Rush University Medical Center, Chicago, IL, USA                       |
| Dr Stephen Oh                             | Washington University School of Medicine, St Louis, MO, USA            |
| Dr Elizabeth Griffiths                    | Roswell Park Comprehensive Cancer Center, Buffalo, NY, USA             |
| Dr Wolfgang Sperr                         | Medical University of Vienna, Vienna, Austria                          |

| Investigator                                                 | Center                                                                                |
|--------------------------------------------------------------|---------------------------------------------------------------------------------------|
| Prof Olivier Hermine                                         | Hôpital Necker-Enfants Malades, Paris, France                                         |
| Dr Cristina Livideanu                                        | CHU Toulouse – Hôpital Larrey, Toulouse, France                                       |
| Prof Andreas Reiter                                          | University Hospital Mannheim, Mannheim, Germany                                       |
| Dr Jens Panse                                                | University Hospital RWTH Aachen, Aachen, Germany                                      |
| Dr Uwe Platzbecker                                           | Leipzig University, Leipzig, Germany                                                  |
| Dr Massimo Triggiani                                         | Ospedale San Giovanni di Dio e Ruggi d'Aragona, University of Salerno, Salerno, Italy |
| Dr Roberta Zanotti                                           | Azienda Ospedaliera Universitaria Integrata Verona, Verona, Italy                     |
| Dr Alessandro Vannucchi                                      | Azienda Ospedaliero-Universitaria Careggi, CRIMM, Florence, Italy                     |
| Dr Ivan Alvarez-Twose                                        | Hospital Virgen del Valle – Complejo Hospitalario de Toledo, Toledo, Spain            |
| Dr Ingunn Dybedal                                            | Oslo University Hospital-Rikshospitalet, Oslo, Norway                                 |
| Dr Tracy George and colleagues<br>(central pathology review) | ARUP Laboratories, University of Utah, Salt Lake City, UT, USA                        |

# BACKUP SLIDES





# Backup: Evaluable C-findings per mIWG-MRT-ECNM criteria

- One or more evaluable C-finding required to be considered response-evaluable

| Non-hematologic C-findings          |                                                                                                                                                                                                                                                                                                                                                                                                                                                                                                                                                                                                           |
|-------------------------------------|-----------------------------------------------------------------------------------------------------------------------------------------------------------------------------------------------------------------------------------------------------------------------------------------------------------------------------------------------------------------------------------------------------------------------------------------------------------------------------------------------------------------------------------------------------------------------------------------------------------|
| <b>Ascites or pleural effusions</b> | <ul style="list-style-type: none"> <li>• Symptomatic ascites or pleural effusion requiring medical intervention such as:               <ul style="list-style-type: none"> <li>– Use of diuretics (Grade 2) or</li> <li>– <math>\geq 2</math> therapeutic paracenteses or thoracenteses (Grade 3) at least 28 days apart over 12 weeks before study entry with one procedure performed during the 6 weeks before study start</li> </ul> </li> </ul>                                                                                                                                                        |
| <b>Liver function abnormalities</b> | <ul style="list-style-type: none"> <li>• Grade <math>\geq 2</math> abnormalities in direct bilirubin (<math>&gt;1.5 \times \text{ULN}</math>), AST (<math>&gt;3.0 \times \text{ULN}</math>), ALT (<math>&gt;3.0 \times \text{ULN}</math>) or AP (<math>&gt;2.5 \times \text{ULN}</math>) in the presence of:               <ul style="list-style-type: none"> <li>– Ascites and/or</li> <li>– Clinically relevant portal hypertension, and/or</li> <li>– Liver mast cell infiltration that is biopsy-proven, or</li> <li>– No other unidentified causes of abnormal liver function</li> </ul> </li> </ul> |
| <b>Hypoalbuminemia</b>              | <ul style="list-style-type: none"> <li>• Grade <math>\geq 2</math> hypalbuminaemia (<math>&lt;3.0 \text{ g/dL}</math>)</li> </ul>                                                                                                                                                                                                                                                                                                                                                                                                                                                                         |
| <b>Marked splenomegaly</b>          | <ul style="list-style-type: none"> <li>• Spleen palpable <math>\geq 5 \text{ cm}</math> below left costal margin</li> </ul>                                                                                                                                                                                                                                                                                                                                                                                                                                                                               |

| Haematologic C-findings                           |                                                                                                                                                                                                                                                                                                                                                                                                                               |
|---------------------------------------------------|-------------------------------------------------------------------------------------------------------------------------------------------------------------------------------------------------------------------------------------------------------------------------------------------------------------------------------------------------------------------------------------------------------------------------------|
| <b>Neutropenia</b>                                | <ul style="list-style-type: none"> <li>• Grade <math>\geq 3</math> absolute neutrophil counts (<math>&lt;1.0 \times 10^9/\text{L}</math>)</li> </ul>                                                                                                                                                                                                                                                                          |
| <b>Anemia (transfusion-independent)</b>           | <ul style="list-style-type: none"> <li>• Grade <math>\geq 2</math> hemoglobin (<math>&lt;10 \text{ g/dL}</math>)</li> </ul>                                                                                                                                                                                                                                                                                                   |
| <b>Anemia (transfusion-dependent)</b>             | <ul style="list-style-type: none"> <li>• Transfusion of <math>\geq 6</math> units packed red blood cells in the 12 weeks before start of treatment and</li> <li>• Most recent transfusion occurring during the preceding 4 weeks and</li> <li>• Transfusions administered for hemoglobin <math>\leq 8.5 \text{ g/dL}</math>, and</li> <li>• Reason for transfusions is not bleeding, hemolysis, or therapy-related</li> </ul> |
| <b>Thrombocytopenia (transfusion-independent)</b> | <ul style="list-style-type: none"> <li>• Grade <math>\geq 2</math> thrombocytopenia (<math>&lt;75 \times 10^9/\text{L}</math>)</li> </ul>                                                                                                                                                                                                                                                                                     |
| <b>Thrombocytopenia (transfusion-dependent)</b>   | <ul style="list-style-type: none"> <li>• Transfusion of <math>\geq 6</math> units of apheresed platelets (or <math>\geq 6</math> pools of random donor or buffy coat) during the 12 weeks preceding treatment and</li> <li>• <math>\geq 2</math> units transfused during the preceding 4 weeks, and</li> <li>• Transfusions administered for platelet count <math>&lt;20 \times 10^9/\text{L}</math></li> </ul>               |

# Backup: mIWG-MRT-ECNM Response Criteria

| Response                                    | Criteria for Response                                                                                                                                                                                                                                                                                                                                                                                                                                                                                                                                                                                                                                                                                                                                                                                                                                         | Response                                                          | Criteria for Response                                                                                                                                                                                                                                 |
|---------------------------------------------|---------------------------------------------------------------------------------------------------------------------------------------------------------------------------------------------------------------------------------------------------------------------------------------------------------------------------------------------------------------------------------------------------------------------------------------------------------------------------------------------------------------------------------------------------------------------------------------------------------------------------------------------------------------------------------------------------------------------------------------------------------------------------------------------------------------------------------------------------------------|-------------------------------------------------------------------|-------------------------------------------------------------------------------------------------------------------------------------------------------------------------------------------------------------------------------------------------------|
| CR                                          | <p>Requires all four of the following criteria, and response duration must be <math>\geq 12</math> weeks:</p> <ul style="list-style-type: none"> <li>No presence of compact neoplastic MC aggregates in the BM or other biopsied extracutaneous organ</li> <li>Serum tryptase level <math>&lt; 20</math> ng/mL</li> <li>Peripheral blood count remission defined as:                             <ul style="list-style-type: none"> <li>ANC <math>\geq 1 \times 10^9/L</math> with normal differential (absence of neoplastic MCs and blasts <math>&lt; 1\%</math>) <i>and</i></li> <li>Platelet count <math>\geq 100 \times 10^9/L</math> <i>and</i></li> <li>Hgb level <math>\geq 11</math> g/dL</li> </ul> </li> <li>Complete resolution of palpable hepatosplenomegaly and all biopsy-proven or suspected SM-related organ damage (C-findings)</li> </ul> | CI                                                                | <ul style="list-style-type: none"> <li>Response duration must be <math>\geq 12</math> weeks</li> <li>Requires one or more of the non-hematologic and/or hematologic response criteria to be fulfilled in the absence of CR, CRh, PR, or PD</li> </ul> |
|                                             |                                                                                                                                                                                                                                                                                                                                                                                                                                                                                                                                                                                                                                                                                                                                                                                                                                                               | SD                                                                | Not meeting criteria for CR/CRh, PR, CI, or PD                                                                                                                                                                                                        |
|                                             |                                                                                                                                                                                                                                                                                                                                                                                                                                                                                                                                                                                                                                                                                                                                                                                                                                                               | PD                                                                | Requires $\geq 1$ element from the criteria below; duration must be $\geq 4$ weeks:                                                                                                                                                                   |
| Any Grade 2 non-hematologic organ damage    |                                                                                                                                                                                                                                                                                                                                                                                                                                                                                                                                                                                                                                                                                                                                                                                                                                                               |                                                                   | <ul style="list-style-type: none"> <li>Worsening by 1 grade <i>and</i></li> <li>Minimum 100% increase (doubling) of laboratory abnormality</li> </ul>                                                                                                 |
| Grade $\geq 2$ albumin                      |                                                                                                                                                                                                                                                                                                                                                                                                                                                                                                                                                                                                                                                                                                                                                                                                                                                               |                                                                   | <ul style="list-style-type: none"> <li>Worsening by 1 grade <i>and</i></li> <li>Decrease by <math>\geq 0.5</math> g/dL</li> </ul>                                                                                                                     |
| Grade $\geq 3$ non-hematologic organ damage |                                                                                                                                                                                                                                                                                                                                                                                                                                                                                                                                                                                                                                                                                                                                                                                                                                                               |                                                                   | Minimum 100% increase (doubling) of laboratory abnormality                                                                                                                                                                                            |
|                                             |                                                                                                                                                                                                                                                                                                                                                                                                                                                                                                                                                                                                                                                                                                                                                                                                                                                               | Grade $\geq 2$ transfusion-independent anemia or thrombocytopenia | New transfusion dependence for an 8-week period of $\geq 4$ units of PRBCs or platelets                                                                                                                                                               |
| CRh                                         | <p>Requires all criteria for CR be met and response duration must be <math>\geq 12</math> weeks; however, patient may have residual cytopenias. The following minimum recovery of peripheral blood counts is required:</p> <ul style="list-style-type: none"> <li>ANC <math>&gt; 0.5 \times 10^9/L</math> with normal differential (absence of neoplastic MCs and blasts <math>&lt; 1\%</math>) <i>and</i></li> <li>Platelet count <math>&gt; 50 \times 10^9/L</math> <i>and</i></li> <li>Hgb level <math>&gt; 8.0</math> g/dL</li> </ul>                                                                                                                                                                                                                                                                                                                     |                                                                   |                                                                                                                                                                                                                                                       |
| PR                                          | <p>Requires all three of the following criteria, and response duration must be <math>\geq 12</math> weeks, in the absence of CR/CRh and PD:</p> <ul style="list-style-type: none"> <li>Reduction by <math>\geq 50\%</math> in neoplastic MCs in the BM and/or other extracutaneous organ at biopsy demonstrating eligible SM-related organ damage</li> <li>Reduction of serum tryptase level by <math>\geq 50\%</math></li> <li>Resolution of one or more biopsy-proven or suspected SM-related organ damage (C-findings)</li> </ul>                                                                                                                                                                                                                                                                                                                          |                                                                   |                                                                                                                                                                                                                                                       |